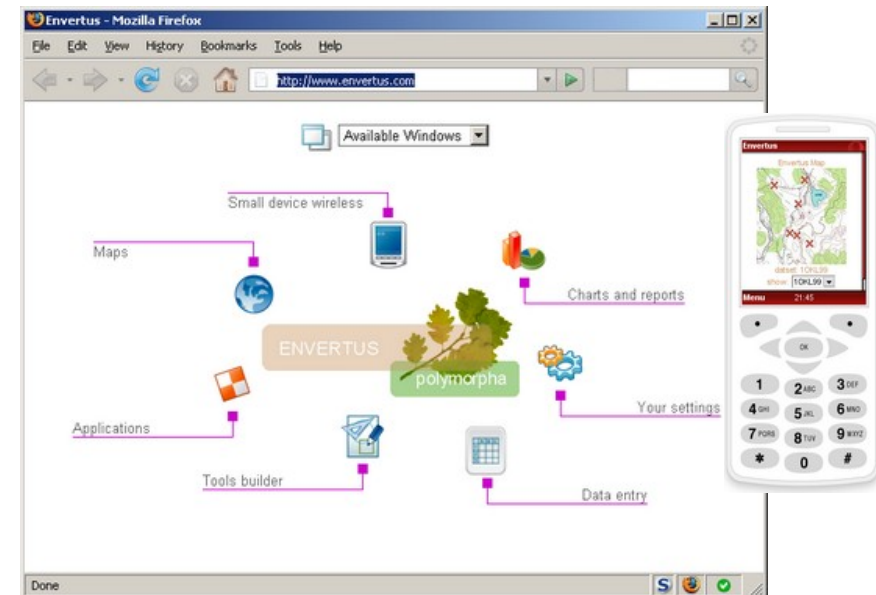


Envertus polymorpha data entry - access - analysis

- Web Browser Data Access
- Small Device/Cell Phone Enabled
- Data Entry and Export
- Integrated Mapping and GIS
- Charting and Reporting
- User Extensible



Ecological Software Solutions LLC (ESS) has developed a next generation software system to address the dynamic and various needs of location based data collection. From its work with clients on projects ranging from radio telemetry, research surveys and ranger patrol data collection ESS is aware of the needs of its service data community sector and how to best manage and solve their data entry, storage and analysis needs.

To help consolidate the full range of small, medium and large scale projects, and their diverse data entry and analysis requirements, the Envertus project has been planned and developed to provide a unified data entry, analysis and database storage solution that

will reliably provide ongoing maintenance, updates and support services continually to each client and their unique needs.

The design goal of the Envertus project is to provide an elegant and sustainable database structure in accompaniment with a supporting suite of extensible tools enabling users a complete and holistic system for entering and interacting with their data. To accomplish this task, Envertus was designed from the ground up to have an easily maintainable and user extensible architecture, with a rich user interface, adaptable to the various needs of different and diverse user communities.

Summary of Basic Envertus Features:

Graphical User Interface (GUI)

- secure user login, separate user and administrator login and use rights
- easy to use thin client, leveraging the latest in web browser technology
- additional form (window) based user interfaces
- enabled for small hand held devices (e.g. cellular phones) with wireless network access
- includes SVG (browser dependent) and image GIS/mapping support

Data Entry and Export

- direct manual data entry, editing and modification of data
- error checking features
- upload data from user files (e.g. data downloaded from a GPS) or from external programs (e.g. data can be loaded to the database directly with GPS units), or alternative network sources
- data may be grouped in any manner desired: waypoint list, track logs, patrols, bearing groups, etc.
- custom user defined details may be created for any defined observation event
- additional and limitless addition information can be added for each event type
- export data as text, Excel®, KML (i.e. Google Earth®), XML, SVG, and other formats
- edit and add data using maps

Geographical Information System (GIS)

- Scalable Vector Graphic (SVG) GIS mapping
- support for importing popular GIS formats
- included GIS libraries for spatial data processing

- ability to link data with spatial features
- editing, inserting and deleting observation event attributes directly from mapped data

Charting and Reporting

- standard chart and reports available to all users
- SVG and Image (browser and server dependent) charts and graphs
- users able to create new report and chart templates using simple integrated tools and wizards
- reports in universal XML/XHTML/HTML formats with Cascading Style Sheet (CCS)
- on the fly report generation from mapped data

Envertus Learning Environment (ELE)

- a comprehensive learning system integrated into the system

Extensibility (availability depends on license and subscription)

- plug-in architecture to allow additional components to be added with little or no administration
- data can be shared across networks or the web
- ability to integrate with diverse and distributed datasets in any other accessible database system
- third party GIS and statistical analysis libraries can be linked to the system for real time data analysis
- wizards allow new features, charts and reports to be added by novice users
- simple IDE (Integrated Development/Design Environment) for users to design and build custom data entry forms for their own unique event attributes

Envertus License and Subscription Options:

Subscription License Options:

Single user +

- Basic access to the Envertus system on a shared ESS server with other single licensed users.
- Access your data on any network enabled workstation or device with a web browser including cell phones and PDA.
- Intended users: individual researchers, small collaborative groups, students.

Multiuser License +

- Inclusive all features of single user license.
- Multiple user logins allowed.
- Additional administrator control to control your own members and users.
- Optional low multiuser or committed sever (requires additional service fees).
- Intended users: universities and institution, larger collaborative groups, student computer labs whose needs are satisfied by build in Envertus features or using those created by others, and who do not need special features or development support from ESS.

Multiuser License with Technical Support +

- Inclusive all features of multiuser license.
- Additional custom technical support and assistance. Enables the adding of advanced features to Envertus as required for specific needs or analysis.
- Intended users: Single or multiple users who need special features added to Envertus or other development support from ESS.

Enhanced Addon Options:

These options are available either as an ongoing subscription or on as need basis.

Server Installation +

- Custom single installation of Envertus on named server with extensibility options, no sharing of server or users except those users you add to the system.
- Requires special requests, license and use agreements approved on a case by case basis.

Additional Support Services +

- source code updates
- custom tools development
- generic technical support
- ELE upgrades and enhancements